

Air Pollution Dispersion Modeling for Diesel Generators at Jamia University Campus, New Delhi, India

Brajmohan , Adil Masood, Kafeel Ahmed*

Department of Civil Engineering, Jamia Millia Islamia (A Central University) New Delhi – 110025, India

Article Info

Article history:

Received 24 January 2018

Received in revised form

10 March 2018

Accepted 20 May 2018

Available online 15 June 2018

Keywords- : ISCST3, Air Quality Modeling, Emission Rate

Abstract

The study is conducted in order to assess the contribution of pollutants from the Diesel generators running in the Jamia Millia Islamia University Campus. In this work, ISCST3 air dispersion model was applied to simulate the air quality for 24 hourly average ground level concentrations of SO_x, NO_x, PM₁₀ and 8 hourly average for CO at various receptor locations. Based on surveys and questionnaires, an inventory was formulated for different Gensets and their characteristics. The ISCST3 model is based on a steady-state Gaussian plume algorithm. It has been developed by USEPA for assessing air quality impact from point, area, and volume sources. Emission rates for different pollutants have been computed using empirical formulas for Gensets based on their capacity. Pollutant emitting potential has also been computed. The predicted values given by ISCST3 model are 11.33µg/m³ for PM₁₀, 58.4 µg/m³ for SO_x, 176.50 µg/m³ for NO_x, 57.02 µg/m³ for CO. Both monitored and simulated values have been compared with NAAQS 2009. A possible solution for minimizing the pollutant load in the area via Diesel Gensets has been suggested in this research which will further help in managing the air quality scenario at the study area.

1. Introduction

With the advent of rapid urbanization and rising air pollution load, It has become quite essential to curb the air pollution exposure by precisely assessing the air quality [1-13]. The problem of Air pollution in Delhi has been in the spotlight for over a decade and it has now been recognized as a brainstorming issue for the whole nation [7,14]. Over the last two decades petrol and diesel consumption have grown by 400% and 300% respectively which has led to the rise of vehicular pollution as well as pollution due to other sources like DG sets, Industries, waste incinerators[8-16]. A typical diesel generator exhaust includes more than 40 toxic air contaminants including a variety of carcinogenic compounds like Benzene, Arsenic, Formaldehyde and Oxides of Nitrogen [9]. Emissions from diesel generators in the form of NO_x, CO and Hydrocarbons chiefly contribute to the deteriorating air quality in the capital [10]. Many air quality models have been used throughout the world for air pollution dispersion that enables effective evaluation of the impacts of air pollution on urban air quality. In 2003 Gooie et al. simulated the air pollution levels using ISCST3EM model caused by inner city traffic in Malaysia, and had compared the emissions with the available national and international standards, based on their analysis they were able to assess the potential health hazards caused by the air pollution so generated [11]. A comprehensive modeling study of PM₁₀ in Treasure valley, Idaho(2011) was executed by Darko et al. Their study utilized the services of ISCST3 model where the simulated values were found in agreement with measurements in both temporal and patterns and annual averages [12].

2. Methodology

The main aim of this study is to model the air quality in Jamia University Campus, New Delhi, India by ISCST3 air quality modeling tool. The elevated levels of pollutant concentration due to Diesel based generators and their effects on the surrounding air quality have been studied in this research. This study has been executed in three stages, the first stage involves assimilation of generator data i.e. generator capacity, characteristics, location, fuel consumption, unit installation. Once the data was formulated then the next stage was executed where the pollutants emission rate for NO_x, SO_x, CO were computed so to be further utilized in ISCST3 model. In the next stage the pollutant potential of generator based on its capacity was determined and also the emission rate for each pollutant was computed. The final stage involves inputting all the required parameters for model run and comparison of simulated data with NAAQS.

*Corresponding Author,

E-mail-address: bmsain@gmail.com, adil.engg.cvl@gmail.com

All rights reserved: <http://www.ijari.org>

2.1 Area of study

Jamia University being located on the south-east corner of Delhi is well connected to all key parts of the city. The university campus covers an area of almost 216 acres with a thick amount of green cover in the entire campus. The DMS latitude of the university is 28° 33' 41.9652" N and DMS longitude is 77° 16' 52.5288" E, laying in the UTM zone 43R the campus has an elevation of 215m. Based on number of source apportionment studies done it has been observed that diesel based generators contribute heavily in the deteriorating air quality of the campus. A total of 40 diesel generators of varying capacity have been installed at pertinent locations having a total capacity of 8650.5 KVA.

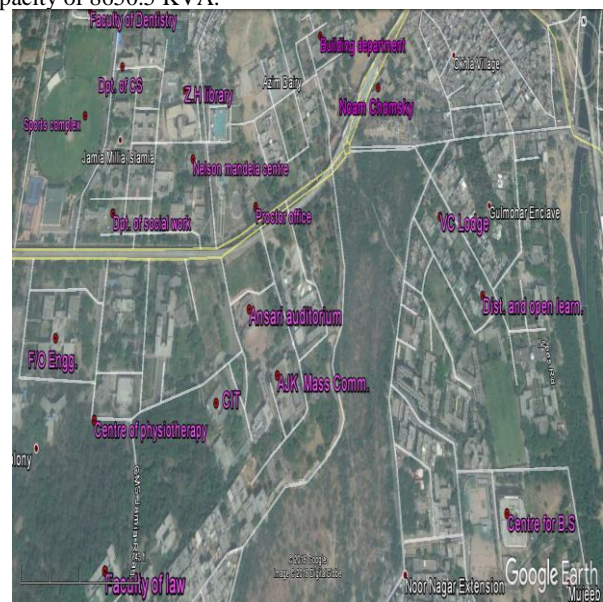


Fig. 1: Genetorar location in the University Campus

2.2 Data collection of Diesel Generators

Following table 1 shows 10 out of 40 diesel generator sets fuel consumption rate @ 75% load (lt./hr) and actual place of installation with their Geographical locations.

There are around 40 diesel generators sets installed in different departments of the Jamia University varying from 15KVA to 1250 KVA. Fuel consumption data is based on diesel having specific Gravity of 0.85 and conforming to IS: 1460:2005. In this study we have considered generator operation time only 1 hr. in a day and 300 hrs in a year for the pollutants emission calculations. Total consumption of all Gensets is 1432.2 lt/hr(378.38 gal/hr).

Table 1: 10 locations of Diesel Generators

Sr. No.	KVA	No.	Fuel consumption @ 75% load (lt/hr)*	Place of Installation	Co-ordinates x, y (m)	
					x	y
	-	-	-	Main gate of F/Engg.	0	0
1	125	01	20	Registrar Office	600	-70
2	140	01	22	Jamana Lal Bajaj House	636	-77
3	125	01	20	Middle School	460	266
4	250	01	42.6	Ansari Auditorium	518	-55
5	200	01	34.4	Main Building MCRC	620	-80
6	150	01	25	Studio Main Building MCRC	620	-80
7	63	01	11.5	Old Studio Building MCRC	620	-80
8	160	01	27.7	Bio-Science Building	620	-80
9	100	01	16.9	Department of Chemistry	620	-80
10	50	01	8.0	Examination Branch	650	-70

2.3 Air Quality Monitoring

Air Quality monitoring was conducted by ITL labs Pvt. Ltd. Delhi, with Respirable Dust Sampler (RDS) having model No. SLE RDS 103. It is manufactured by Spectro Lab Equipment Pvt. Ltd. Delhi. The filter paper used for this monitoring was "Glass micro fibre filter" and the size was 20.3X25.4 cm. Sampler was installed at the Gate No. 1 of Faculty of Engg. & Technology (Jamia University). Sampling was done for the pollutants CO, NOx, SOx & PM₁₀ on hourly basis, from 1000 hrs. to 1800 hrs.[17]. Monitored value from Respirable Dust Sampler (RDS) are given in table 2.

Table 2: 8 hrs monitored value from RDS

S No	Parameters	Unit	Permissible Limit as per NAAQ 2009 Standard	Monitored Value
1	CO	µg/	2000 (8 hr.)	1140
2	SO _x	µg/	80	18.7
3	NO _x	µg/	80	57.8
4	PM ₁₀	µg/	100	392

3.0 Air Quality Modeling

Ambient air concentration levels of PM₁₀, SO_x and NO_x have been predicted in winter season using the Industrial Source Complex Short Term (ISCST3) model. The ISCST3 model is based on a steady-state Gaussian plume algorithm, and is applicable for estimating ambient impacts from point, area, and volume sources out to a distance of about 50 kilometers.

3.1 Modeling Requisite

3.1.1 Characteristics of different Gensets

Installed generators characteristics have been shown under which includes, stack height, exit temperature of flue gas, exit velocity and exhaust diameter of generator. Out of 40 generators only 10 have been represented in the table.

Table 3: Genset data required for model run [3-4]

Genset Sr. No.	KVA	Stack Height (HS), m	Exit Temp. (Ts) (K)	Exit Velocity (Vs), m/s	Exhaust Dia (Ds), mm
1	125	22	600	6	115
2	140	22	600	8	165
3	125	22	600	6	115
4	250	25	700	10	200
5	200	25	650	10	180
6	150	22	600	8	165
7	63	20	550	5	90
8	160	22	650	8	165
9	100	20	550	6	115
10	50	20	550	5	90

3.1.2 Fuel consumption and emission rates for different Gensets

The Emission rate calculation has been shown below:

$$\begin{aligned}
 &\text{Emission rate for SO}_x \text{ in g/s} \\
 &= \frac{\text{Fuel consumption rate} \times \text{Density of diesel} \times 1000\text{grams}}{1800} \\
 &\text{Emission rate for NO}_x \text{ in g/s} \\
 &= \frac{3.85 \times \text{Dieselgenerator capacity in Hp}}{3600} \\
 &\text{Emission rate for PM}_{10} \text{ in g/s} \\
 &= \frac{0.24 \times \text{Dieselgenerator capacity in Hp}}{3600} \\
 &\text{Emission rate for CO in g/s} \\
 &= \frac{0.045 \times \text{Dieselgenerator capacity in Hp}}{3600} \quad [1-5]
 \end{aligned}$$

Table 4: Fuel consumption and emission rates of 10 Gensets [1-2]

Sr No.	Rating (hp)	Fuel intake (l/hr)	Sox Emission Rate Qs (g/sec)	NOx Emission Rate Qs (g/sec)	PM ₁₀ Emission Rate Qs (g/sec)	CO Emission Rate Qs (g/sec)
1	142.38	20	0.047	0.152	0.009	0.045
2	159.46	22	0.052	0.171	0.011	0.051
3	142.38	20	0.047	0.152	0.009	0.045
4	284.75	42.6	0.101	0.289	0.015	0.078
5	227.80	34.4	0.081	0.231	0.015	0.062
6	170.85	25	0.059	0.183	0.011	0.055
7	71.76	11.5	0.027	0.079	0.008	0.044
8	182.24	27.7	0.065	0.185	0.010	0.050
9	113.90	16.9	0.040	0.122	0.008	0.036
10	56.95	8	0.019	0.063	0.006	0.035

4. Model run

Data required for model run for predicting pollutant concentration are:

- (i) Source data: physical dimensions (stack location, stack height, stack top inner diameter), as well as exit velocity and temperature of gas and pollutant emission rate,

(ii) Hourly meteorological data for the simulation period: wind speed, wind direction, ambient temperature, stability class and mixing height
 (iii) Receptor data: receptor coordinates and height of receptor
 The Input parameters for CO required by ISCST3 model after inputting all the required parameters has been shown in figure 2.

**	SRCID	QS	HS	TS	VS	DS	
30	SRCPARAM	GENSET1	0.045	22	600.0	06.0	0.115
30	SRCPARAM	GENSET2	0.051	22	600.0	08.0	0.165
30	SRCPARAM	GENSET3	0.045	22	600.0	06.0	0.115
30	SRCPARAM	GENSET4	0.078	25	700.0	10.0	0.200
30	SRCPARAM	GENSET5	0.062	25	650.0	10.0	0.180
30	SRCPARAM	GENSET6	0.055	22	600.0	08.0	0.165
30	SRCPARAM	GENSET7	0.044	20	550.0	05.0	0.090
30	SRCPARAM	GENSET8	0.050	22	650.0	08.0	0.165
30	SRCPARAM	GENSET9	0.036	20	550.0	06.0	0.115
30	SRCPARAM	GENSET10	0.035	20	550.0	05.0	0.090
30	SRCPARAM	GENSET11	0.051	22	600.0	08.0	0.165
30	SRCPARAM	GENSET12	0.131	26	900.0	15.0	0.200
30	SRCPARAM	GENSET13	0.051	22	600.0	08.0	0.165
30	SRCPARAM	GENSET14	0.078	25	700.0	10.0	0.200
30	SRCPARAM	GENSET15	0.045	22	600.0	06.0	0.115
30	SRCPARAM	GENSET16	0.051	22	600.0	08.0	0.165
30	SRCPARAM	GENSET17	0.045	22	600.0	06.0	0.115
30	SRCPARAM	GENSET18	0.043	20	550.0	05.0	0.090
30	SRCPARAM	GENSET19	0.050	22	650.0	08.0	0.165
30	SRCPARAM	GENSET20	0.062	25	650.0	10.0	0.180
30	SRCPARAM	GENSET21	0.051	22	600.0	08.0	0.165
30	SRCPARAM	GENSET22	0.045	22	600.0	06.0	0.115
30	SRCPARAM	GENSET23	0.045	22	600.0	06.0	0.115
30	SRCPARAM	GENSET24	0.078	25	700.0	10.0	0.200
30	SRCPARAM	GENSET25	0.301	35	1020.0	45.0	0.300
30	SRCPARAM	GENSET26	0.078	25	700.0	10.0	0.200
30	SRCPARAM	GENSET27	0.045	22	600.0	06.0	0.115
30	SRCPARAM	GENSET28	0.172	28	900.0	19.0	0.200
30	SRCPARAM	GENSET29	0.172	29	900.0	19.0	0.200
30	SRCPARAM	GENSET30	0.180	30	1000.0	40.0	0.250
30	SRCPARAM	GENSET31	0.172	28	900.0	19.0	0.200
30	SRCPARAM	GENSET32	0.078	25	700.0	10.0	0.200
30	SRCPARAM	GENSET33	0.036	22	600.0	06.0	0.115
30	SRCPARAM	GENSET34	0.021	20	550.0	03.0	0.075
30	SRCPARAM	GENSET35	0.010	20	550.0	03.0	0.075
30	SRCPARAM	GENSET36	0.180	30	1000.0	40.0	0.250
30	SRCPARAM	GENSET37	0.180	30	1000.0	40.0	0.250
30	SRCPARAM	GENSET38	0.078	25	700.0	10.0	0.200
30	SRCPARAM	GENSET39	0.051	22	600.0	08.0	0.165
30	SRCPARAM	GENSET40	0.010	20	550.0	03.0	0.075
30	EMISUNIT		1.0E+06 GRAMS/SEC				MICROGRAMS/M**3

Fig. 2: ISCST3 model run for CO

5. Result

The ground level pollutants concentrations of PM₁₀, SO_x, NO_x & CO for this study were predicted through ISCST3 model. The maximum values of average predicted PM₁₀, SO_x, NO_x and CO concentrations have been shown in table 5.

Sr no	Air quality parameters	Time weighted average	Max predicted values, (µg/m ³)	Monitored values (µg/m ³)	National ambient air quality standard, (µg/m ³)
1	PM ₁₀	24 hr	11.33	392	100
2	SO _x	24 hr	58.40	18.7	80
3	NO _x	24 hr	176.50	57.8	80
4	CO	8 hr	57.02	1140	2000

Table 5: Predicted and monitored values in comparison with NAAQS

The maximum value for PM₁₀ concentration has been observed 11.33 µg/m³, at the receptor location (800.00, 0.00, and 0.00). In fact, the predicted PM₁₀ value when compared with the standard value of 24 hourly PM₁₀ concentration prescribed by the CPCB was found to be

much lower. The predicted ground level SO_x concentration of 58.37 µg/m³ was observed which was found to be within the CPCB standard/limits of 80 µg/m³. Finally the predicted maximum value of 176.49 µg/m³ was simulated for NO_x and the value exceeded the CPCB standard/limits of 80 µg/m³ for the residential area. The comparison between observed and simulated data has been shown in figure 3.

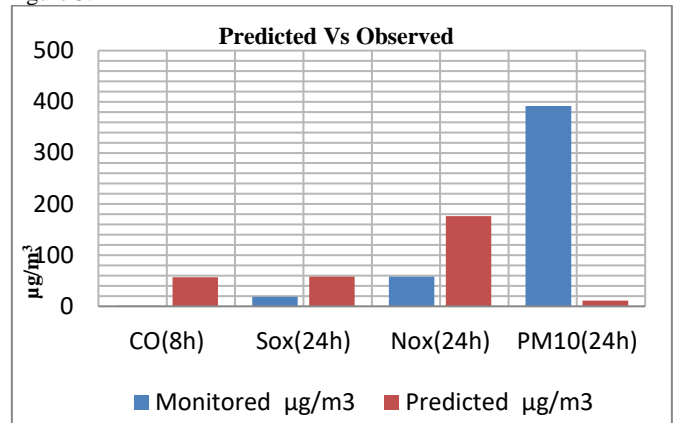


Fig. 3: Comparison of predicted and observed data

Table 6: Comparison between 40 Gensets Conc. & recommended 4 Gensets Concentration

S. No.	Air quality parameters	Time weighted average	Conc. from 40 Gensets (8650kva), µg/m ³	Conc. from 4 Genset (2500 kvaX4), µg/m ³
1	PM ₁₀	24 hr	11.33	4.41
2	SO _x	24 hr	58.4	26.47
3	NO _x	24 hr	176.5	166.56
4	CO	8 hr	57.02	16.2

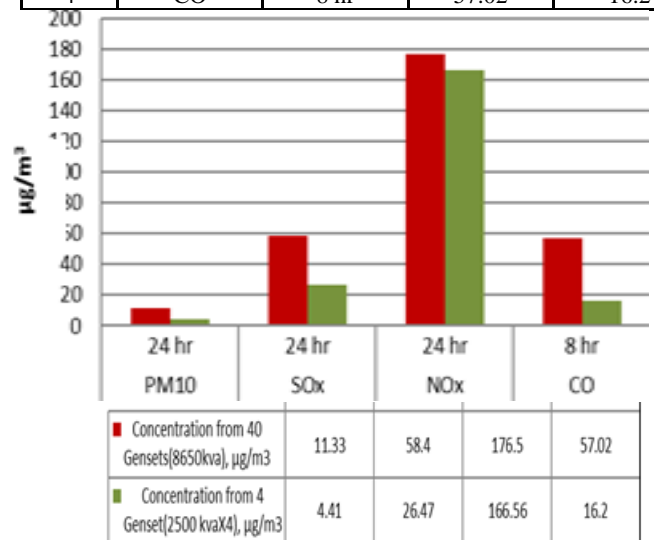


Fig.4: 40 Gensets Vs 4 Gensets Concentration

6. Conclusions

ISCST3 and local meteorological data were used to predict the concentration of major air pollutants in the campus area. Our findings indicate that after the implementation of the proposed project, concentrations of air pollutant are found to be well below the permissible CPCB Standards for ambient air quality. However, the PM concentration is elevated due to the Construction, traffic and diesel generators implementing proper Environmental Management Plan along with mitigation measures like Water sprinklers, and trees

planting, around the industrial area can minimize the pollution and protect the environment from the adverse effects.

If 4 Gensets having capacity 2500 kVA installed, instead of 40 Gensets of 8650 kVA capacity, the pollutants concentration will be reduced nearly half of their previous concentration value for PM₁₀, SO_x & CO. The findings will assist in improving the air quality index and scenario around the campus, their prior implementation will decrease load on generators running in and around the campus which will further improve the surrounding air quality.

References

- [1] Potential to emit workbook, Department of Environmental quality Michigan, USA, 09, 2015
- [2] Air Emission Calculations & Methodology, Virginia offshore wind technology advancement project, 12, 2013
- [3] <http://koel.kirloskar.com/gensets>, Diesel Generator Technical Specification, Kirloskar Electric Co. Ltd., 2015
- [4] Electric Power Application, Engine & Generator Sizing, application and installation guide, Caterpillar, 2008
- [5] Air Pollutants Emission Estimation for the Port of Long Beach Administration Building and Maintenance Facility Project, USA, 2007.
- [6] S Gulia, A kumar, M khare. Performance evaluation of calpuff and aermod dispersion models for air quality assessment of an industrial complex, Journal of scientific and industrial research 2015.
- [7] MSnPriyanka, RK Gaurav, B Jahnavi, GD Ram. Prediction of PM, SO₂ & NO_x - GLC'S from Point Source Emissions Using Air Modeling, International Journal of Scientific & Engineering Research, 2013.
- [8] NEERI Nagpur, Air quality monitoring, emission inventory and source apportionment studies for Delhi, 2008
- [9] N Awofeso. Generator Diesel Exhaust: a Major Hazard to Health and the Environment in Nigeria, 2011
- [10] <http://www.equinoxlab.com/d-g-emission-monitoring/>, equinox labs
- [11] G Bee, O Chee, K Hock, H Lee. Modeling inner city traffic generated air pollution, Investing in innovation, 2003
- [12] Darko Koracin, Domagoj Podnar, Judith Chow, Vlad Isakov, Yayi Dong, Alison Miller & Mike McGown, "PM10 Dispersion Modeling for Treasure Valley, Idaho", 2011.
- [13] Sudarsanam Padam, Sanjay K. Singh, "urbanization and urban transport in india the sketch for a policy", 2001.
- [14] <https://www.ft.com/content>, pollution in India: gasping for air, Nov 2015.
- [15] https://www.envirotechonline.com/article/airmonitoring/6/abhishek_mishra/assessment_of_nox_pollution_over_megacity_delhi/2036.
- [16] M Sharma. Comprehensive Study on Air Pollution and Green House Gases (GHGs) in Delhi, Indian Institute of Technology Kanpur, 2016
- [17] B Mohan, K Ahmed, S Afsar. Study on Air Quality in the near field of MMA Road –A case study, 2016